

CRS9000 Coating Removal System

The CRS9000 Coating Removal System is a self contained workstation designed for the safe removal of conformal coatings from Printed Circuit Boards and other electronic assemblies.

The CRS9000 with ESD control has additional features that collaboratively neutralize surface charges and reduce electrostatic build-up. It is a compact, chair-height workstation with an integrated dust collection system and an attached air dryer. It confines the blast area while a built-in HEPA-equipped dust collector extracts spent abrasive. It is easy to use and easy to maintain.



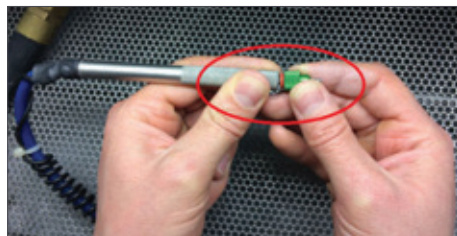
Ionized Bar

Floods the entire work chamber with ionized air to neutralize static build-up. Built-in sensors monitor the effectiveness of the ion flow and indicator lights alert the operator to any changes in operation.



Conductive Nozzle

Limits the potential for a charge to travel to the board from the abrasive hose. A conductive nozzle also blocks a charge that could arc from the operator. Should be used with the grounded hand piece.



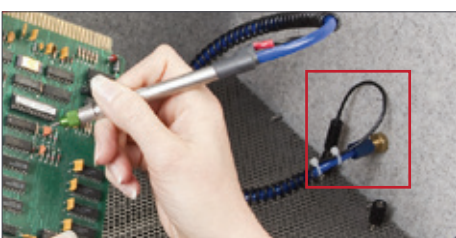
Magnifier

Reduces eye strain and helps operator see small details more easily. Provides 2.5x magnification and an 8-10" depth of focus and allows an operator to sit at a natural, comfortable distance.



Grounded Hand Piece

Works with the conductive nozzle to provide a conduit for static, sending it straight to the grounding jacks instead of onto a PCB.



Window Shield

Protects workstation glass against abrasive ricochet and preserves your investment. Easy to attach and remove.



Get Started Today

For additional details, please contact Astronics Test Systems.

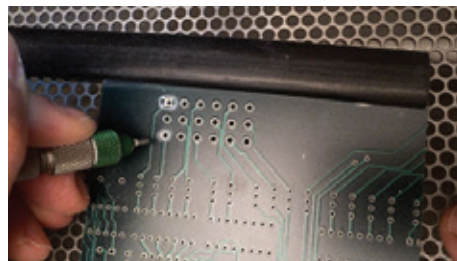
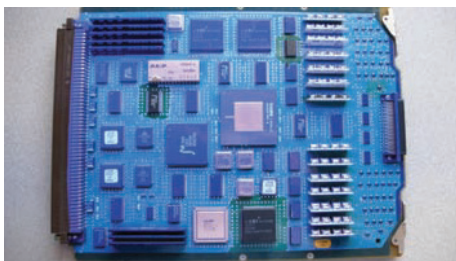
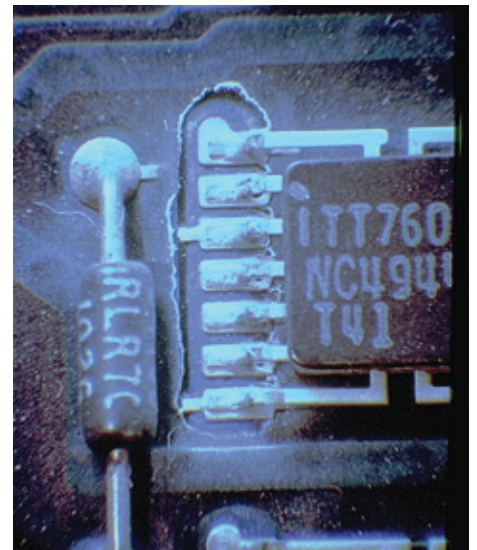
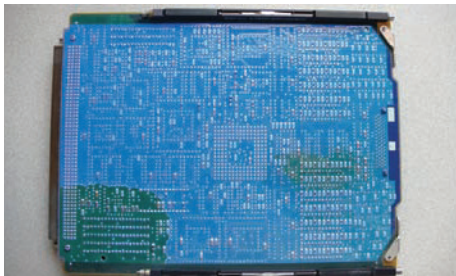
12700 Ingenuity Dr.
Orlando, FL 32826
+1.407.381.6062
ATSales@astronics.com
AstronicsTestSystems.com



CRS9000 Specifications

Available in: **115V / 60Hz, 4 amp**
 230V / 50Hz, 4 amp

Dimensions	30" wide x 44" high x 34" deep
Weight	210 lbs (approx.)
Interior Space	2.2 cubic feet, 24" wide x 10" high x 14" deep
Window	Tempered glass opening (hinged) 23" x 11"
Lighting	18W black fluorescent lights (2). Optional: 40W cool fluorescent lamp
Air Flow	500 SCFM
Filter	HEPA-99.97% efficiency on 0.3 micron-sized particles
Filter Area	30 square feet
Inlet Air Pressure	80 psi air supply of 10 SCFM, in addition— to normal blaster supply



The Coating Removal System CRS9000 is a self-contained workstation designed for the safe removal of conformal coatings from printed circuit boards and other electronic devices.

Contact us today for more information
+1.407.381.6062 | Astronics.com